

MECH. BRAKE SYSTEM

DESIGNED FOR HYDRAULIC WHEEL MOTORS

M15 WM FOR 8 & 10 INCH WHEELS

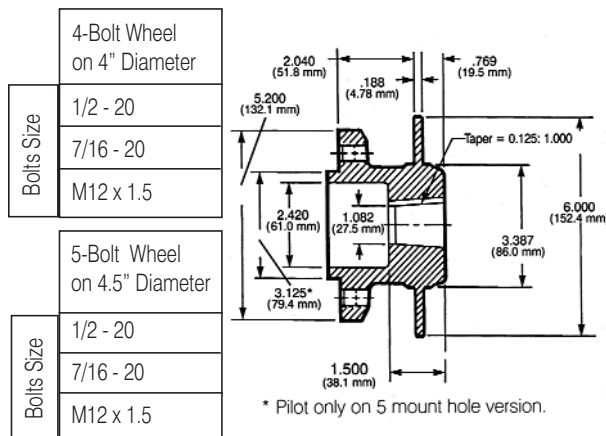
FEATURES:

- Capable of 1,450 lbs. of clamp force.
- Maximum 2,500 lbs. - in. of torque.
- Designed to fit inside an 8" diameter wheel.
- Available as a complete system, Aluminum Caliper, Ductile Cast Iron Bracket & Hub/Disc
- Simple single piece caliper bridge design.
- Choice of CW or CCW lever actuation.
- Minimum moving parts to wear out.

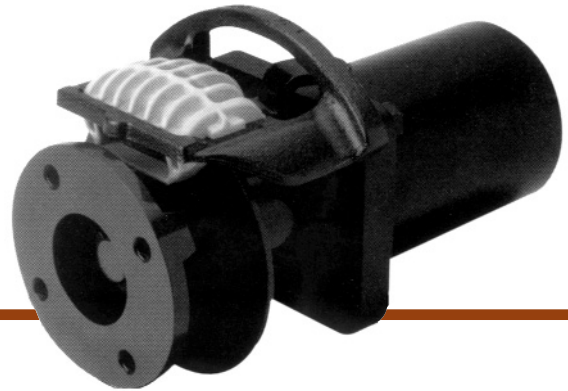
TYPICAL SPECIFICATIONS:

Series	M15 WM
Rotor Diameter	6.00 inches
Rotor Thickness	0.188 in.
Maximum Stroke	50 degrees
Maximum Lever Force @ 2.25" Hole	240 lbs.
Lining Type	non asbestos organic
Total Lining Area	2.9 sq. in.
Usable Lining Thickness Per Pad	0.125 in.
Mount Design	floating
Casting Material	aluminum
Weight With Bracket	2.5 lbs.

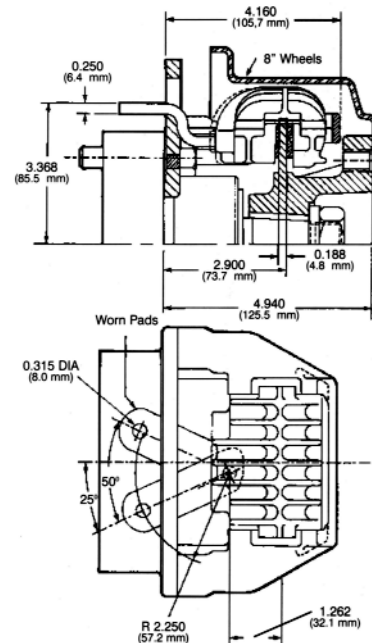
WHEEL MOTOR HUB-DISC:



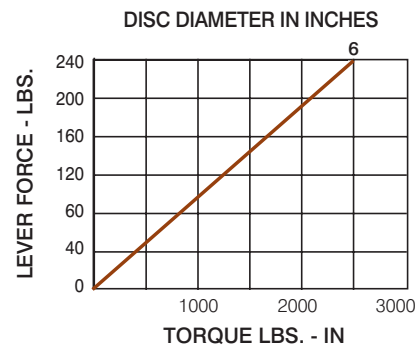
Specifications are guidelines only and subject to change. Consult HB for specific model, part number and assembly drawings.



REFERENCE DIMENSIONS:



TORQUE INFORMATION:



Formula: $T = 12.03 \mu F \left(\frac{DIA}{2} - 0.55 \right)$ for 2.25" Lever

T = developed torque in lbs.-in. DIA = diameter of rotor in inches
 F = applied lever force in lbs. μ = friction coefficient, assume 0.35



HB Performance Systems Inc.
 5800 West Donges Bay Road
 Mequon, Wisconsin 53092
 Phone (262) 242-4300
 Fax (262) 242-0524
 www.hbpsi.com

Printed in USA